



  
GOLDEN HILL *Golden Hill*  
GOLDEN LEGACY

**HOTLINE**

011 633 5555 011 633 7777

**EMAIL**

marketing@skypeak.co.ke

**WEBSITE**

skypeakkenya.com



QR CODE

**SALES CENTER**

3rd Floor, The Stellato Mall, 42 Muthithi Road, Westlands, Nairobi

All contents and texts displayed in this brochure are for reference only and do not constitute an offer in the contract. The right of interpretation shall belong to the developer.



GOLDEN HILL GOLDEN  
LEGACY



PROLOGUE  
A VISION FOR LIFE AT ITS FINEST

In a time when cities rise ever higher and life moves ever faster, true luxury is being redefined. Luxury is no longer measured by marble, glass or scale, but by the rare privilege of waking up to forest air, sharing serene mornings with loved ones and raising a family where nature and legacy meet.

Golden Hill is designed for those who have moved beyond material indulgence; for those who long for calm mornings, green horizons and a home that becomes the cradle of generational memory.

It is a sanctuary for the heart, where urban energy meets natural serenity.





DEVELOPER  
STATEMENT  
A LEGACY OF EXCELLENCE

In the heart of a city that never stops growing, Golden Hill emerges as a quiet promise. For over 27 years, Beijing Xiangfeng Group has shaped environments that go beyond construction. Since 1999, we have delivered distinguished luxury residences, hotels, commercial developments and cultural landmarks across some of the world's most prestigious cities. Each project reflects a singular belief: true excellence is timeless, intentional and impossible to replicate.

Golden Hill is not a repetition of past achievements. It is thoughtfully designed with deep respect for its setting, positioned alongside one of Nairobi's last remaining natural forests. Here, architecture is carefully integrated with the landscape, allowing every space to feel grounded, purposeful and human.

More than a residence, Golden Hill is an enduring statement of our values a place where life, design and nature exist in quiet harmony.

GOLDEN HILL  
GOLDEN LEGACY





# CORE POSITIONING

A COLLECTION OF 102 LUXURY HOMES



## True Luxury is Rare

True Luxury is Rare.

Golden Hill: 102 Residences. One Natural Forest.  
Nestled on the edge of Nairobi's vibrant city heart, this  
is where nature meets the city; a living  
forest, untouched, authentic and Kenyan.  
Not man-made. Not replicated. Just pure, rare  
and yours to claim.

Space to breathe. Serenity to live. Legacy to leave.  
Golden Hill is reserved for those who do not follow  
trends, but define legacy; collectors of rarity, custodians  
of beauty, builders of something that must last.





GOLDEN HILL  
GOLDEN LEGACY



# SERENITY MEETS CITY LIFE

Golden Hill brings the best of both worlds: a natural sanctuary without giving up the conveniences of urban living

## SEAMLESS CONNECTIVITY

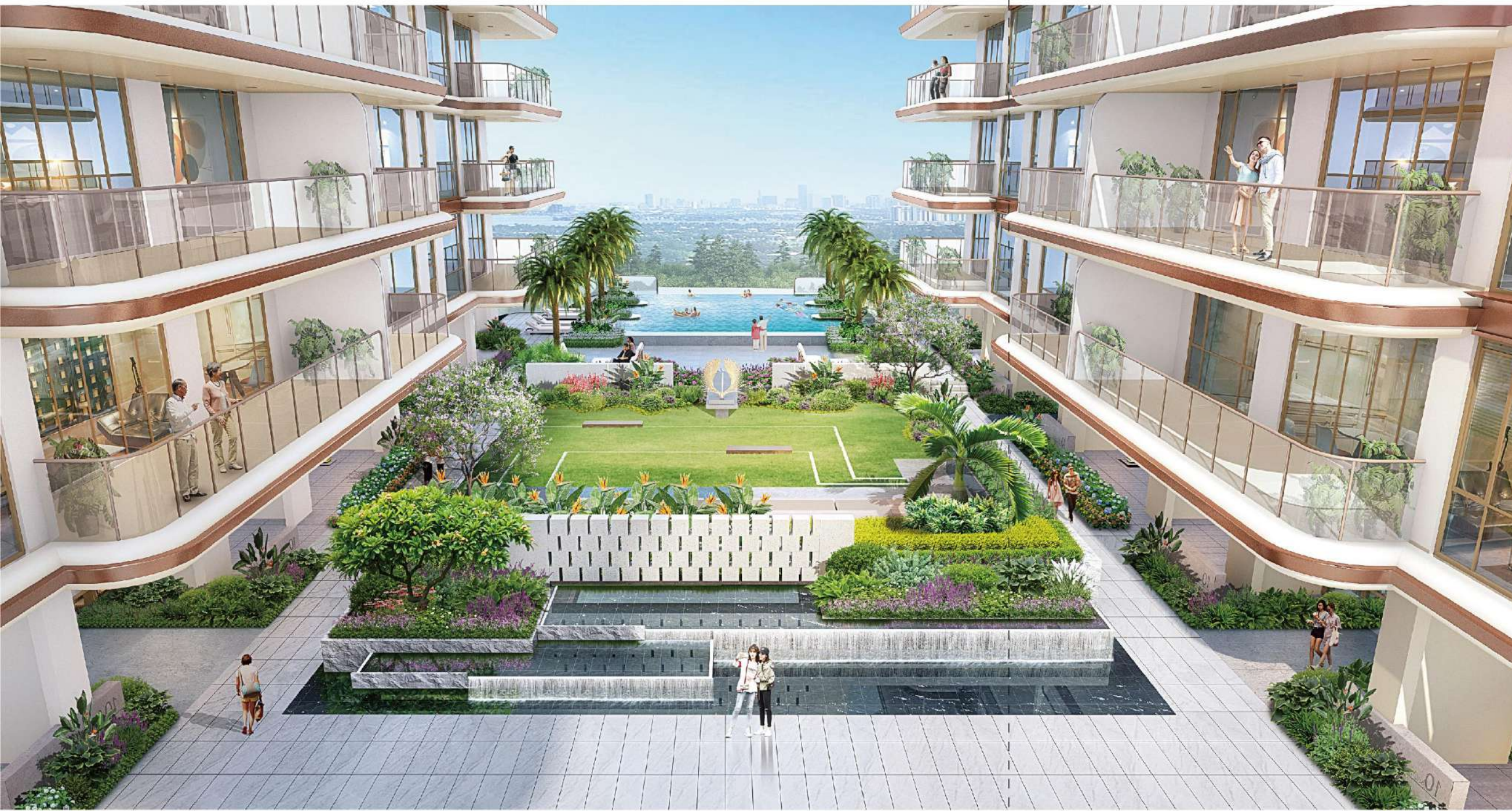
Direct access to Donyo Sabuk Ave  
Quick links to major transport hubs  
Walking distance to bus routes and commercial centers

## ALL YOU NEED WITHIN REACH

Supermarkets & shopping centers  
World-class hospitals  
Renowned schools and universities  
Restaurants, cafés, and leisure spaces

## NEIGHBORHOOD CHARACTER

Fashionable, green, vibrant, and meticulously planned, a place where modern urban living meets tranquil nature, crafting a lifestyle of "effortless luxury."



## LOCATION ADVANTAGE

### FOREST EDGE SANCTUARY



Golden Hill is set along Nairobi's  
Karura Forest a living ecosystem shaped by  
gentle hills and winding waterways.



### WHY IT STANDS APART:

Fresh forest air and a naturally serene environment  
Scenic, unobstructed views of trees and sky  
A rare balance of privacy, tranquility and city access  
A sanctuary thoughtfully preserved for a select few

This is where the city's energy meets the calm of nature.

# ARCHITECTURE IN PERFECT HARMONY WITH NATURE

Golden Hill is where luxury meets the land. Every structure is designed to honor the forest and flow with Nairobi's natural contours.

#### Slope-smart design:

buildings follow the land, minimizing disruption

#### Terraced elegance:

homes cascade gently into the forest

#### Natural waterways preserved:

elevated layouts protect existing streams and drainage

#### Seamless aesthetics:

light, refined facade that merge with greenery

## THE RESULT IS MORE THAN ARCHITECTURE—IT'S A SANCTUARY

Here, your legacy is born of nature, cradled by forests and crafted for generations who cherish space, serenity and timeless grace.



A detailed architectural rendering of a modern, multi-story residential building. The building features prominent, curved balconies with glass railings and a facade of large windows. In the foreground, a lush garden with several tall palm trees and various plants surrounds a large, infinity-style swimming pool. The pool's water is clear and blue, reflecting the sky and the building. A person is seen swimming in the pool, and others are relaxing on lounge chairs under white umbrellas. The overall atmosphere is serene and luxurious.

# ARCHITECTURAL HIGHLIGHTS

EVERY DETAIL IS QUIET, REFINED  
AND PURPOSEFUL

Forest-View Infinity Pool:

Water merges seamlessly with treetops and sky

Sunken Gardens & Courtyards:

Natural light and ventilation gracefully flow indoors

Panoramic Living Spaces:

Views reach toward forest and horizons

Timeless Color Palette:

Soft whites and champagne tones complement nature

# LANDSCAPE PHILOSOPHY YOUR PRIVATE FOREST RESORT



Inspired by Nairobi's iconic Jacaranda blooms, the landscape is curated to awaken the senses and gently restore the soul.

**Nature-First Design:** Every path, garden and waterway celebrates the land's natural terrain and contours.

**Emotional Sanctuary:** Spaces are thoughtfully created for calm reflection and meaningful family connection.

**Immersive Greenery:** Layered planting delivers multi-sensory experiences through shade, scent, texture and sound.

**Seamless Flow:** Architecture and landscape merge effortlessly, allowing the outdoors to become part of everyday living.

Golden Hill transforms everyday living into a resort-like experience.

A simple walk through the community feels like entering a private forest retreat, where calm unfolds naturally and beauty is always within reach.

Inspired by Nairobi's iconic jacaranda blooms, the landscape is designed to delight the senses and soothe the soul.

At Golden Hill, nature is not a backdrop; it is the experience.



# LUXURY BEGINS BEFORE YOU EVEN REACH YOUR DOOR



Elegant lobby: warm tones, serene ambiance and professional concierge service  
Private lounges: comfortable spaces for residence and guests to relax  
Dedicated elevator halls: Exclusive access for each residence (one elevator lobby per residence)  
High-speed elevators: fast, smooth and individual elevators with separate cabins for individual units.  
24/7 Security: Comprehensive security for residents and property  
Underground Parking: 2 spaces per household on average, ensuring smooth, safe access and egress  
Every step from entrance to home is designed to reflect sophistication, privacy and effortless prestige.



# KIDS' ACTIVITY ZONE

A WORLD OF JOY FOR LITTLE ONES



Indoor Kids' Space: Safe, built with eco-friendly materials with warm colour palettes, including puzzle areas, picture book corner and soft play zones

Outdoor Playground: Nature-integrated design, adjacent to lawns and pathways

Age-Appropriate Facilities: Tailored for toddlers to pre-teens, fostering growth and community





# COMMUNITY GREEN SPACES



GOLDEN HILL OFFERS A VARIETY OF CALM  
GREEN SPACES FOR  
EVERYONE TO ENJOY

Central Courtyard: The main gathering space for residents

Shaded Pathways: Comfortable walking routes for rest and relaxation

Open Lawns: Open areas for family time and outdoor activities

Activity Areas: Safe, well-placed spaces for all age groups

Water Features: Peaceful water areas that reflect the surrounding greenery



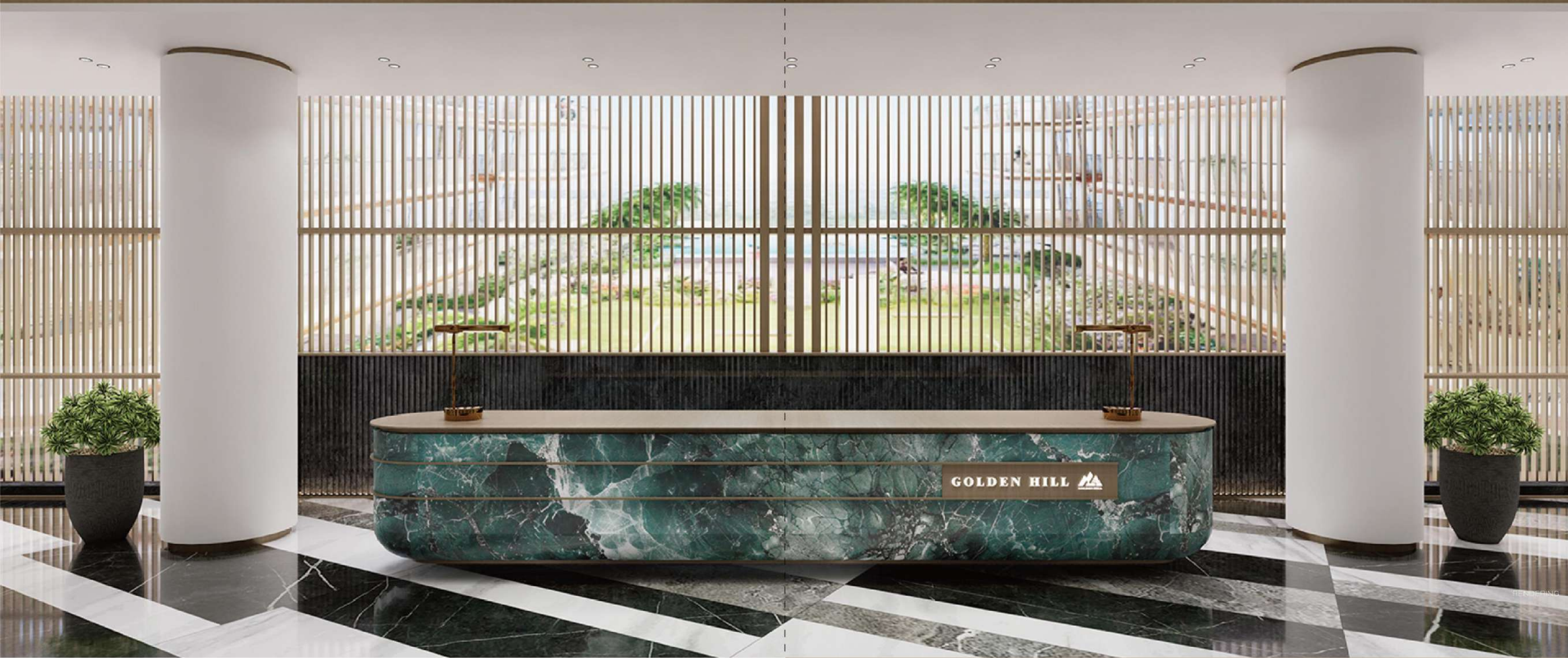


# ARRIVAL EXPERIENCE DIGNITY IN EVERY STEP

EVERY HOMECOMING BECOMES A MOMENT  
OF CALM AND PRESTIGE

Golden Hill's entry sequence follows  
a three-stage arrival ritual,  
gradually transitioning  
residents from the city into tranquility:

Grand Entrance Plaza  
Private Driveway & Drop-off  
Residential Lobby Sequence



## GRAND LOBBY & EXCLUSIVE ACCESS

LUXURY BEGINS BEFORE YOU EVEN  
REACH YOUR DOOR







Elegant lobby with concierge service, private resident lounges and exclusive elevator access to each home. High-speed elevators, 24/7 security and ample underground parking ensuring comfort, privacy and seamless arrival.

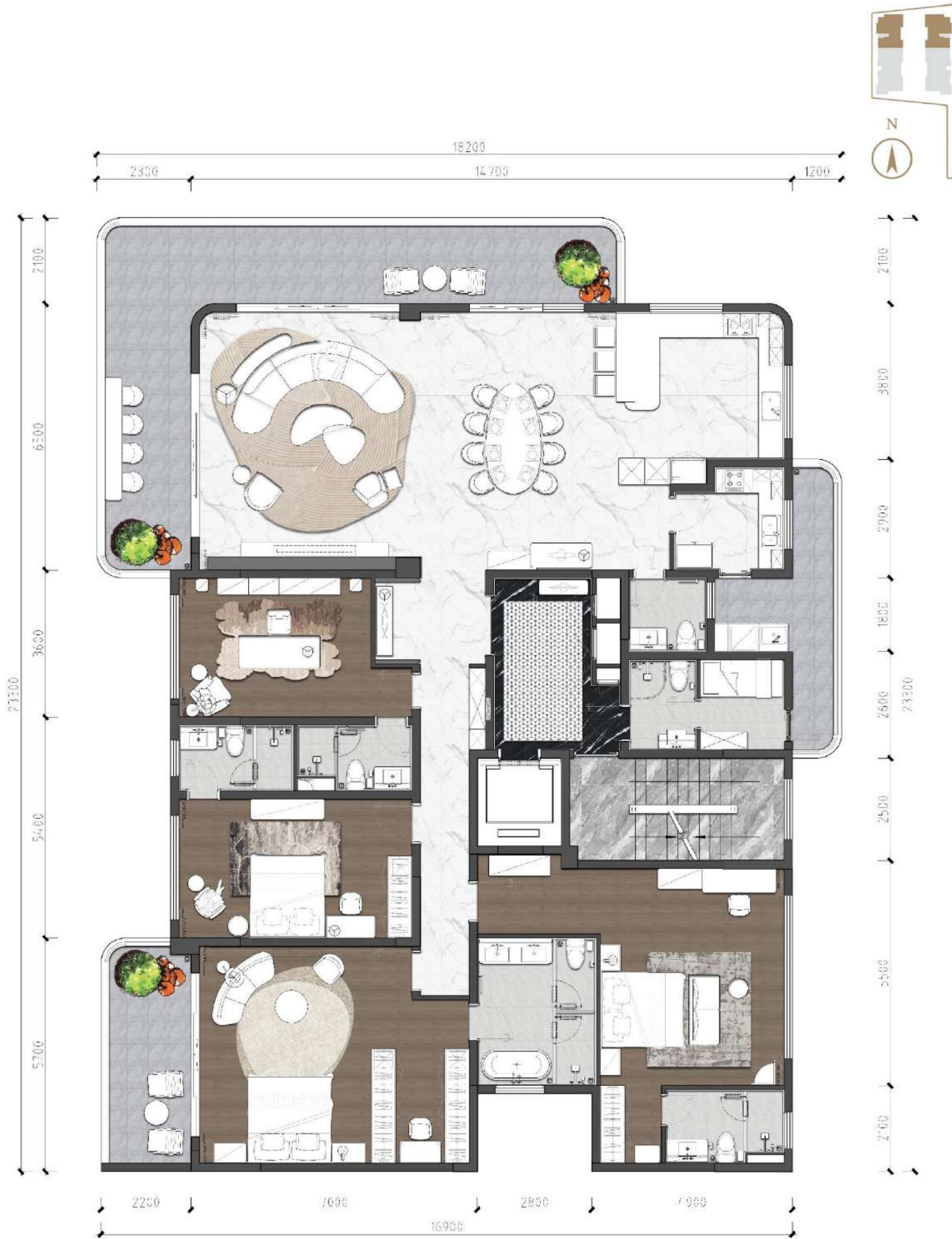
# RESIDENCES OVERVIEW

GOLDEN HILL OFFERS  
A THOUGHTFULLY CURATED SELECTION  
OF LUXURY HOMES THAT MAXIMIZE SPACE  
COMFORT AND FLEXIBILITY

Each layout is designed to:

-  Celebrate natural light
-  Offer efficient, waste-free spatial planning
-  Invite forest views
-  Provide refined living for families of all sizes





# A

## TYPE RESIDENCE

4 Bedrooms 5 Washrooms and DSQ  
379.39 SQM 4083.72 SQFT

### VISIONARY GRANDEUR



- Private elevator access
- Floor-to-ceiling forest views
- Versatile kitchen with open and enclosed zones
- Expansive forest-facing great room for grand gatherings



# B

## TYPE RESIDENCE



3 Bedrooms 4 Washrooms and DSQ  
230.47 SQM | 2480.76 SOFT

## REDEFINED ROMANCE



Open living and dining spaces connected seamlessly to the balcony  
Master suite with private terrace and ensuite bath  
Flexible secondary bedrooms, bathed in natural light



GOLDEN HILL  
GOLDEN LEGACY



# C

## TYPE RESIDENCE



3 Bedrooms 4 Washrooms and DSQ  
287.97 SQM | 3099.68 SOFT

### LUXURIOUS COMFORT



Circular flow design + three functional balconies  
Clear zoning for living, work and rest  
Panoramic windows + private elevator access



# D

## TYPE RESIDENCE



2 Living rooms 4 Bedrooms 5 Washrooms and DSQ  
514.82 SQM | 5541.47 SOFT

## SKY LIVING



360° unobstructed forest & city views  
Expansive private terrace for entertainment and  
Four suites with dedicated lounges



Everything essential  
for elevated living  
is thoughtfully designed  
and integrated.

## AMENITIES LUXURY WITHOUT LIMITS



A complete ecosystem of exclusive amenities includes

- Infinity heated pool
- Scenic fitness center
- Private residents' lounge
- Spa & relaxation rooms
- Multi-generational garden spaces
- Riverside lawns
- Outdoor reading and meditation areas
- Family event lawns
- Children's playground
- 24-hour manned security
- Standby power generator
- On-site water storage
- High-speed elevators

# LEGACY VALUE BUILT FOR GENERATIONS

GOLDEN HILL IS NOT ONLY A RESIDENCE  
BUT ALSO A HERITAGE ESTATE



A symbol of rare natural luxury

A secure, private neighborhood

A timeless home for families

An irreplaceable property in a rapidly growing city

A future legacy shaped today

This is a home meant to grow in emotional and investment value  
with each passing year.

