

A2 Unit ▶
64.4 SQM 693.2 SQFT

1 BEDROOM · A2 UNIT



Bright and airy, with clear zoning, it is suitable for successful individuals who have certain requirements for the living scale.

A1 Unit ▶
78.46 SQM 844.54 SQFT

1 BEDROOM · A1 UNIT



Spacious and open, suitable for self-living, rentals, meeting light social needs.

A3 Unit ▶
107.57 SQM 1157.87 SQFT

2 BEDROOMS · A3 UNIT



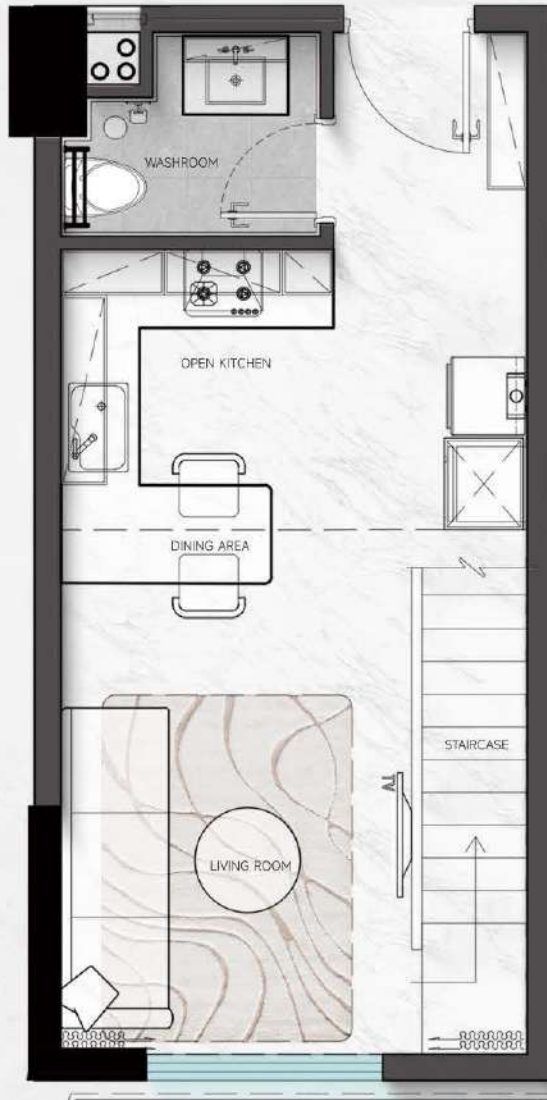
With its spacious layout and distinct functional zoning, this residence is ideally suited for accommodating a family of three or tenants seeking a two-bedroom configuration.

L1

Duplex ▶

66.87 SQM 719.78 SQFT

1-BEDROOM · L1 DUPLEX



> GROUND FLOOR



> THE SECOND LAYER

Featuring vertically stratified spatial design and independently operating functional zones, this residence is optimally tailored for young professionals pursuing personalized living experiences.

L2 Duplex ▶
91.53 SQM 985.22 SQFT

1-BEDROOM · L2 DUPLEX

▶ GROUND FLOOR



▶ THE SECOND LAYER



Employing reinforced dynamic-static zoning alongside advanced daylighting-ventilation optimization protocols, the spatial configuration demonstrates particular compatibility with stylistically conscious compact family units requiring concurrent accommodation of domestic functionality and low-intensity social interchange potential.

L3 Duplex ▶
138 SQM 1485.42 SQFT

2 BEDROOMS · L3 DUPLEX



> GROUND FLOOR



> THE SECOND LAYER

Featuring high space utilization and strong connectivity, it is suitable for small families or young people who prefer duplex structures.

L4 Duplex ▶
155.1 SQM 1669.48 SQFT

3 BEDROOMS · L4 DUPLEX



▶ GROUND FLOOR



▶ THE SECOND LAYER

The space is generous and offers excellent living comfort, making it ideal for high-end families or rental properties with high space requirements.